

FROM
SAILORN
TO SAILION
จาก สำนักรู้ สำนักรู้



EMBRACING
THE MOMENT


VILLA DEVA
Resort & Hotel



FROM HISTORICAL SITE
TO MODERN THAILAND

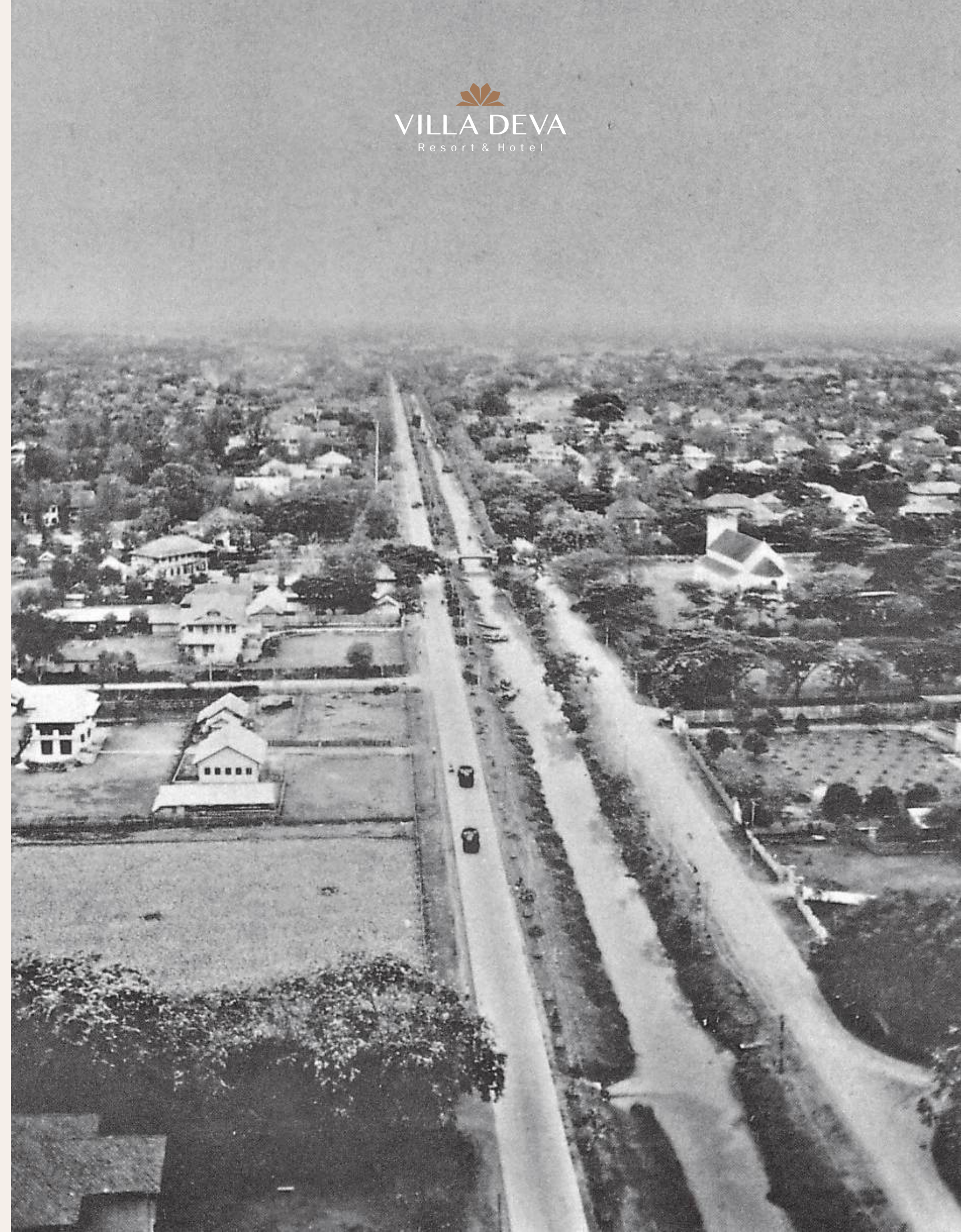
During the reign of King Rama V, when Siam enjoyed her moment of economic glory, the rice trade attracted merchants from both China and Europe, resulting in the need for improved logistics and transport systems, particularly water-based transport. In 1892, the King granted concessions to dig canals by which the concession holders acquired ownership of the strips of land alongside each new canal.

Chao Sua Yom was commissioned to dig a canal linking Khlong Thanon Trong (Klong Wat Hua Lamphong) with the Chao Phraya River. The new canal was named Klong Chao Sua Yom, or Khlong Nai Yom, and the excavated soil was used to construct the roads running along each bank.

Chao Sua Yom was later awarded the royal title 'Luang Sathon Rachayuk' and the name of the road and canal were subsequently changed to Sathon in his honour. The land on the banks of the Sathon canal was developed and became the location of embassies, international company headquarters and commercial centres. It is commonly regarded as the first land development project in the country.

THE DIFFERENT SPELLING OF "SATHON"

In former years, the Thai spelling for the name Sathon was not limited to one form. It was found that the two different homophonous consonants of "๓" and "๕" (equivalent to English 't') were both used interchangeably in King Rama V's time. Consequently, the Bangkok Metropolitan Administration collaborated with The Royal Institute of Thailand to standardize the spelling. Documents dating from the reign of King Rama VI showed that the commonly accepted spelling of Sathon Road used the consonant ๓, as did the family name of Satharanon, which was bestowed upon the nobleman Muen Intharaphat by the king. The Royal Institute of Thailand thus agreed that this spelling should henceforth be used for Sathon and BMA subsequently announced the notification of the Ministry of Interior in 1998.





FROM CONCEPT TO ARCHITECTURE

Villa Deva Resort and Hotel is inspired by the traditional Thai way of life. Every element of the hotel is designed with meticulous attention to honour the prestigious legacy of Sathon's rich history. Aesthetic, handcrafted Thai features and motifs have been incorporated into the design concept, from the traditional Thai roof shape to the wooden sunshade panels. The inspiration of the unique carved lattice pattern for these sunshades is drawn from the auspicious 'pla tapien', a plaited fish mobile traditionally woven using coconut fronds, which perfectly connects the contemporary world with the Orient of the past. The hotel's masterplan was based on the concept of 'Tha Nam' or waterfront, a traditional way of life for Thais, with a flight of steps leading down to the water. Various elements create the feeling of living near the river, and the covered walkways bring our guests closer to nature. Also, the tree supports were designed after the style of the Ayutthaya elephant kraal, or Phaniat, neatly bound with rope, to celebrate Thai culture and identity.



VILLA DEVA
Resort & Hotel



FROM IDEAS
TO IMPLEMENTATION

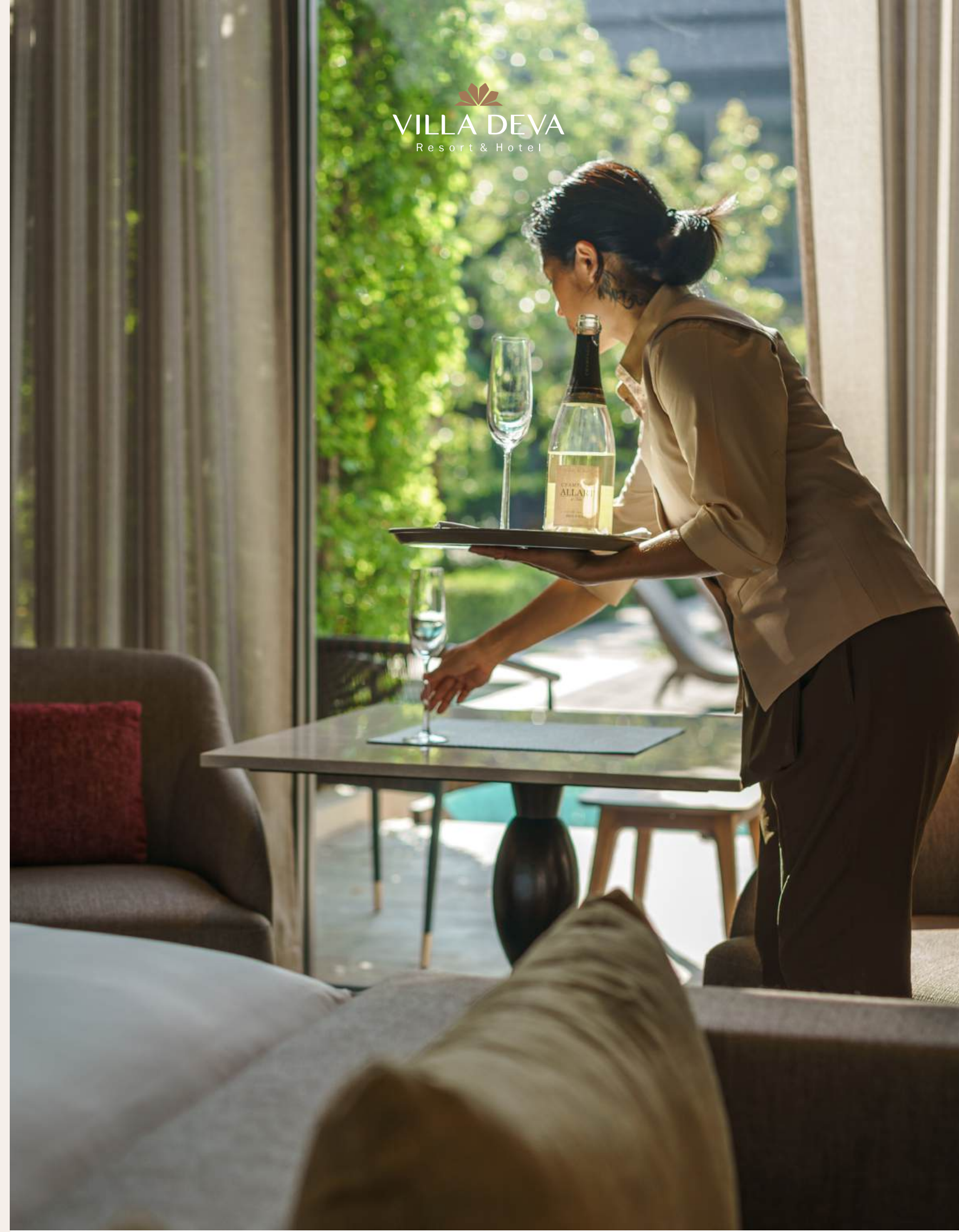
Your utmost privacy is our top priority. Every element of the hotel has been carefully designed to ensure your perfect happiness throughout your stay. All guest rooms border a central open space, offering views of the landscaped gardens and pool, which evoke a sense of calm and tranquility. Also, all the ground floor guest rooms connect directly to the sparkling blue pool. The covered walkway harmoniously links the indoor and outdoor spaces while the spa and fitness room overlook the crystal-clear pool and beautiful, lush garden. In addition, the ballroom can comfortably accommodate up to 150 guests, and the meeting room is ideal for board meetings.





FROM GOODWILL
TO HOSPITALITY

We are committed to providing our guests with perfect happiness and a lasting impression. We therefore pay close attention to every detail and to each stage of service, from the pre-arrival to check-in and throughout the stay until after saying farewell. The thoughtful design and décor of the hotel, with its lush garden and convenient location in Bangkok's central business district, provide a home-away-from-home experience with the charming Thai touch of yesteryear. With our first-class service, excellent cuisine and unique lifestyle philosophy, you can be sure that every moment at Villa Deva will become an unforgettable memory.



FROM GASTRONOMY
TO ART ON THE TABLE

VelaBhirom Cuisine is delighted to serve you with the precious heritage of traditional delicacies, recounting the stories of Thai cuisine through carefully selected ingredients, meticulous preparation and aesthetic presentation, an Art de la Table that provides the perfect sensual experience.





FROM COOL EVENING
TO WARM CONVERSATION

MAYRAYA WINE BAR

At Mayraya Wine Bar, you can always enjoy your best moments with your loved ones, friends or business partners—whether to reminisce about the good old days or to share a vision for the future. Indulge yourself with a wide selection of fine wines and drinks on the patio, amidst the soothing palette of cool, tropical greens and blues of the lush gardens and swimming pool.



VILLA DEVA
Resort & Hotel





FROM EXPERIENCE
TO MEMORIES

Inspired by the name of Thailand's capital city "Krung Thep Maha Nakhon" (The Great City of Angels), Villa Deva, (The Abode of the Gods), is a pocket of tranquility in the heart of the city that reimagines the concept of relaxation. Arriving at Villa Deva is like stepping into another world. The luxury guest rooms and villa, located amidst greenery and sparkling blue waters, offer a warm stay with a Thai touch in each detail. The exquisite design evokes the charm of the traditional Thai way of life, creating perfect happiness and unforgettable memories.



VILLA DEVA
Resort & Hotel



THE
MOMENTS

